



1 square La Bruyère  
75009 Paris  
T: +33 (0)1 45 26 03 39  
M: +33 (0)6 31 20 20 20  
Courriel : absel@fournols.biz  
Skype : abselparis  
www.absel.fr

Juin 2007

## Introduction to Lumisheet

The company ABSEL, established as a partner, represents and sales Lumisheet from the company Fawoo.

Lumisheet panels are flat elements for direct or back lighting, based on a tangential technology.

Lumisheet lighting panels are sold for the following application among others:

### ***Architecture & Design***

- Bringing light from walls, floors or punctually suspended in a grid system, behind a facade...
- Mood / ambient lighting inside or outside.
- Decorative lighting
- Back lighting for stained glasses
- Lighting source's need in a small volume

### ***Commercial Environment – Shop fitting***

- Lighted shelves
- Products enhancement
- Logo made to shape

### ***Signage for Retail***

- Signs, characters
- Signalisation
- Exhibitions or Franchise displays

### ***Art and artistic work***

- Back lighting of high quality prints in low hight frame
- Sculpture's lighting

### ***Etc...***

Lumisheet panel's technology is covered by numerous patents worldwide. This is valid for the finished product but also for its means of production.

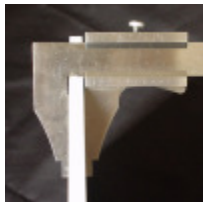
It is the first lighting panel of its kind that integrates the light source directly inside the acrylic support. To the opposite to most of the competition product that have the light source outside the panel.

The combination of high performance white LED with a unique 3D V-shape cutting to the surface gives a homogenous lighting to the surface of the Lumisheet panel.



## Technical data of Lumisheet Lighting panel

- Exclusive 3D V-cutting
- 8mm only thick panel



- Formats: From 60x152mm to 600x1800mm (larger and longer elements can be produced on request but with cares and/or light quality limitations)

Range of standard sizes, square or rectangular (see below)

Dimensions in millimetres (mm) <sup>(1)</sup>	Dimensions in inches (")	Luminosity (Lx) <sup>(2)</sup>	Elec. Power (w) <sup>(3)</sup>
152 × 152	6 × 6	3200	2.2
203 × 203	8 × 8	3000	3.0
254 × 254	10 × 10	2900	3.7
300 × 300	12 × 12	2300	4.5
600 × 600	24 × 24	2000	18.0
900 × 900 <sup>(4)</sup>	36 × 36	1500	28.5
1000 × 1000 <sup>(4)</sup>	40 × 40	1320	31.5
600 × 300	24 × 12	2100	9.0
1200 × 300	48 × 12	2100	18.0
1800 × 300	72 × 12	2100	27.0
1800 × 600	72 × 24	1600	54.0

(1) external dimensions

(2) luminosity measured with a Luxmetre stand one millimetre above the panel

(3) depending on panel size, the supply can be in 12 (most common), 24 or 48 volts from a 220V adaptor

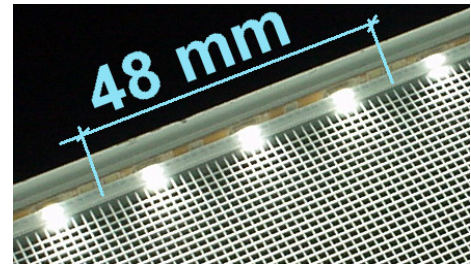
(4) Distance between LED rows being bigger than 600mm, the luminosity in the centre of the panel can be less homogenous

- Possible cut in any type of shape (Circular up to 900mm diameter). Upon request.





- The pitch/step of the 3D V-cutting changes depending on Lumisheet size. A second opposite row of LED can be applied depending on sizes.
- The integration of LED is made by steps of around 48mm.



- The Lumisheet panel is supplied with an electric 220V to low voltage adaptor. Adaptor characteristics are related to a specific panel size. Adaptors comply with CE, UL, EK and PSE standards.
- Possibility to choose the side power cord going out.
- Optional, adaptation for IP67 or IP68 water and dust tight classifications.
- Colour temperature ~ 5.300 °K
- Life time expectancy: about 50.000h. LED are rigorously selected and sorted for the highest quality. However, these remain electric components that can show failure earlier than their expected life time. As for any light source.
- Low power consumption
- LED lead free (Rohs conformity)
- Low heat generating and damage protection against overheating, thanks to an integrated heat diffuser.

For some types of applications the Lumisheet panel could have to be combined with other materials to respect local regulations (mechanical or fire requirements).

